

Programmed repairs

Complaint:

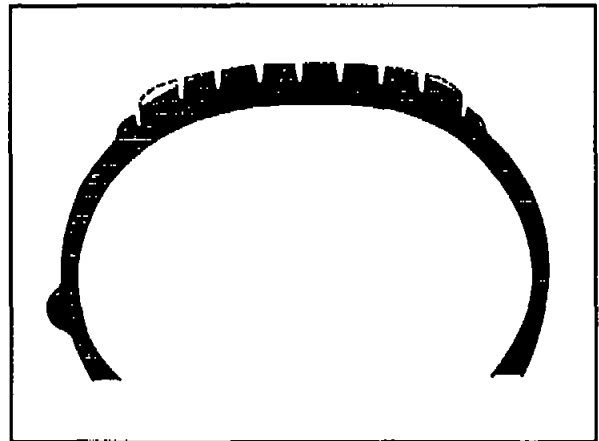
Uneven tire wear patterns on front axle

Cause/remedy

Insufficient amount of toe-in causes increased wear of inboard tire shoulders, or **excessive amount of toe-in** causes increased wear of outboard tire shoulders.

When assessing tire wear patterns, observe the following:.

On front wheels a somewhat increased wear of the tire shoulders compared to the center of the contact patch is quite normal. The wear of the shoulder pointing towards the middle of the road can be more pronounced (e.g. in countries with righthand traffic, left wheel outboard, right wheel inboard).

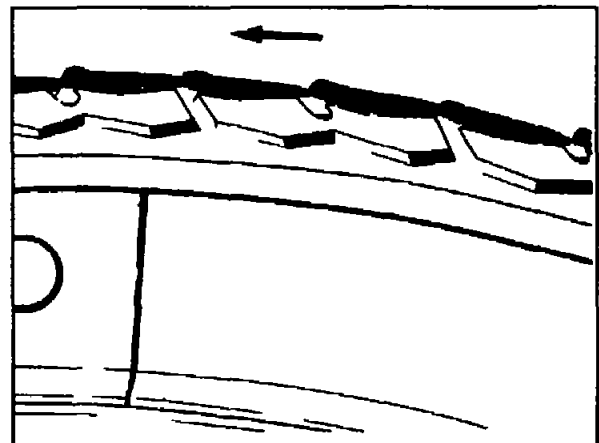


P40-0130-13

Shoulder wear on front tires

Depending on service conditions, driving habits, tire make and tire type, an increased wear of approx. 2 mm for 10,000 km at the shoulder can be considered normal as compared to the center of the contact patch.

In addition, scrubbing at the shoulders can cause saw-tooth profiles, depending on tire tread patterns and service conditions.



P40-0129-13

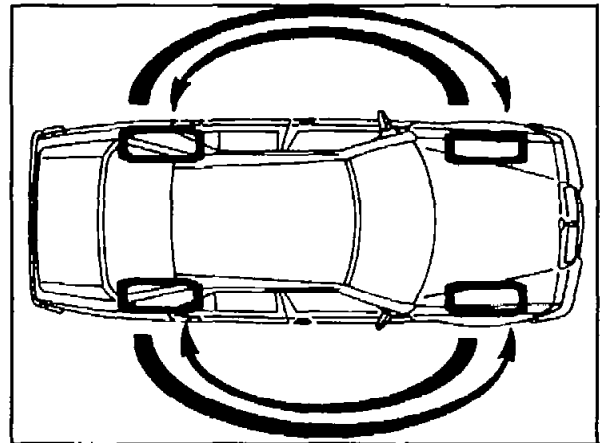
Saw-tooth wear pattern at tire shoulder

Remedy:

A. Correct wheel alignment on front axle:

- Adjust camber to lower tolerance limit
 - Adjust caster to upper tolerance limit
 - Check ball point position
- Toe-in, ready-to-drive (front of wheels pressed apart with 90 to 110 N). Set to specified value.

B. Note specified tire rotation intervals; according to experience between every 5,000 to 10,000 km of service life.



P40-5374-13

Complaint:

Vehicle heads to the right on a flat road surface

**Vehicle concerned: Model 124
(except 4Matic)**

Cause/Remedy

Influences of tolerances in components of front axle and body.

Perform the following wheel alignment adjustments on the front axle (ready-to-drive).

Caster

Wheels in straight-ahead position (Toe-in value 0)	Left = 10°, right = 11°
With wheels turned	Left = 9°40', right 10°40'
Camber and toe-in	(unchanged) specified value

Complaint:

Tire/outboard shoulder wear at the front wheels.

Vehicle concerned: **Model 124
4MATIC**

Cause/remedy

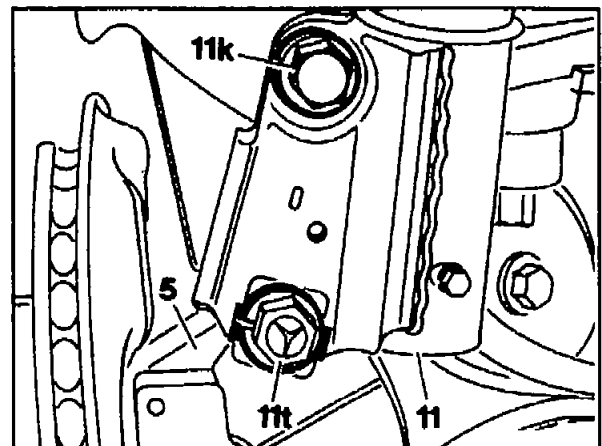
Check wheel alignment at the front axle
Set or aim for the following guidance values

- Camber: - 0° 50'
- Caster: 10° 30'
- Track: - 0° 10' (pressed)

Note

If the values cannot be achieved by turning the eccentric bolts, loosen damper strut mounting bolts (11k and 11t) and press the wheel in the direction of negative camber. Tighten mounting bolts.

Tightening torque 185 Nm.



P33-2111-13