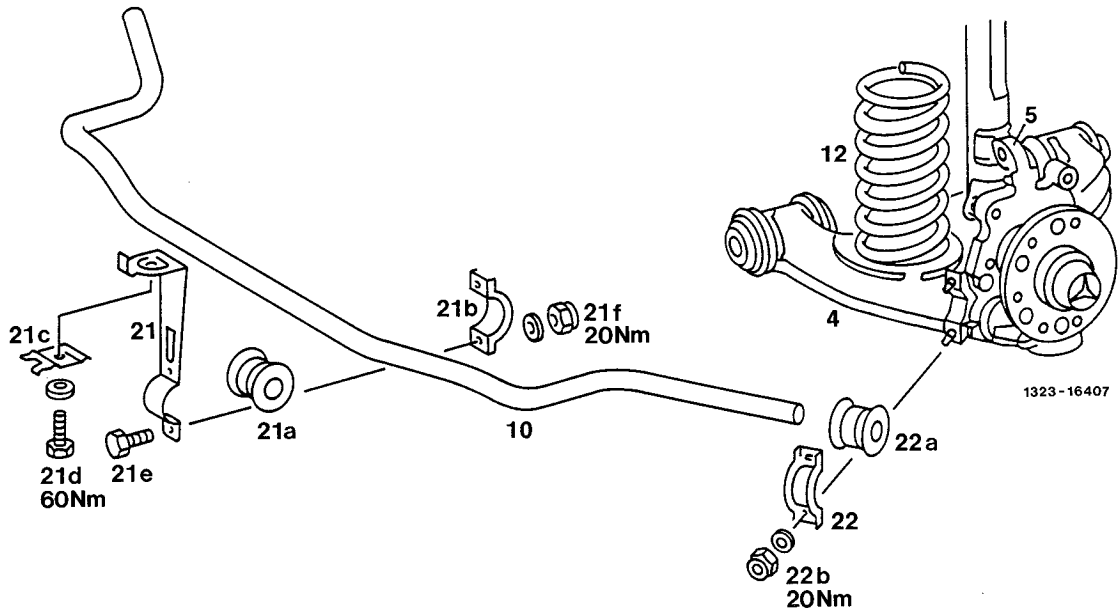


32-300 Removing and installing front torsion bar



- | | |
|--|--|
| Vehicle | lift, lower, remove front wheel, reinstall.
Lug bolts 110 Nm. |
| Bottom engine compartment paneling | remove, install (items 2, 9). |
| Mounting bracket (22b) | unscrew of wishbone (4) on left and right, screw on (items 3, 8). Replace self-locking hex. nuts (22f), 20 Nm. |
| Mounting bracket (21b) | unscrew on mount (21), screw on (items 4, 7).
Replace self-locking hex. nuts (21f), 20 Nm. |

Méx. near dot (21), 20 Nm.

at (10) remove, install

(21a, 22a) remove, install

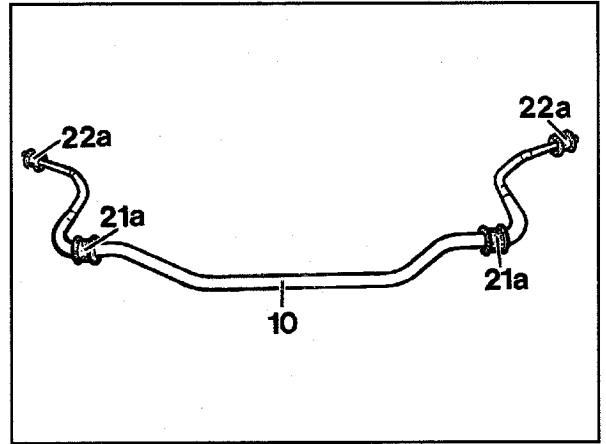
Model 124: Rubber mount version with Teflon/polyester stocking (see notes).
Model 201: Note (item 6).

Note

Model 124:

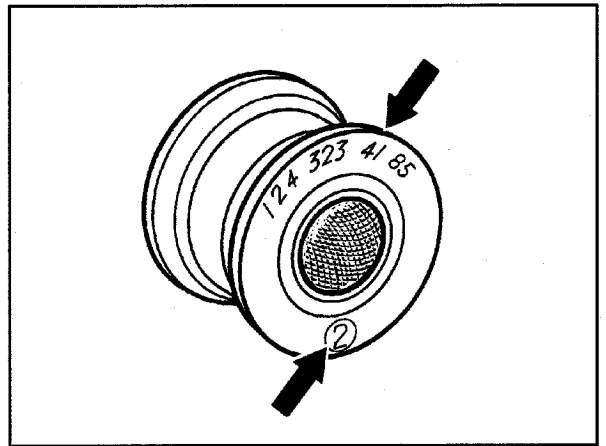
Since December 1991 modified rubber mounts have been used on model 124 for mounting the torsion bar on the mounting bracket (body) and on some vehicle models on the wishbone as well.

- 10 Torsion bar
- 21a Rubber mount
- 22b Rubber mount



P33-2009-13

These rubber mounts have a Teflon/polyester stocking on the inside of the bore. This is indicated by the part number embossed on the front end of the rubber mount as well as a code number (arrow) on the majority of the rubber mounts.



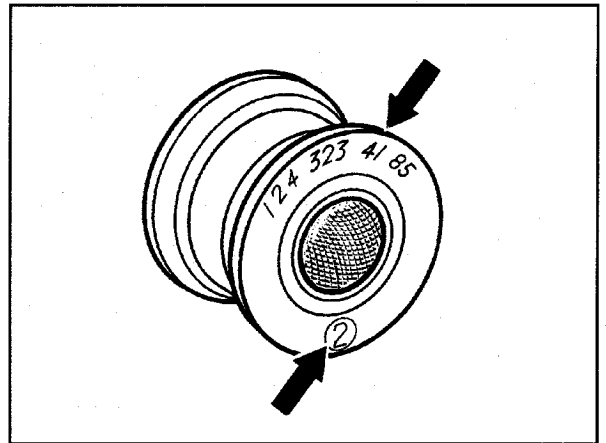
P32-5328-13

Repair notes

Before installing the rubber mount clean the torsion bar. Do not use lubricant, because this would damage the Teflon/polyester stocking.



The modified rubber mounts can also be used for repair on model 124, 201 vehicles produced earlier or when complaints are received regarding noises.



P32-5328-13

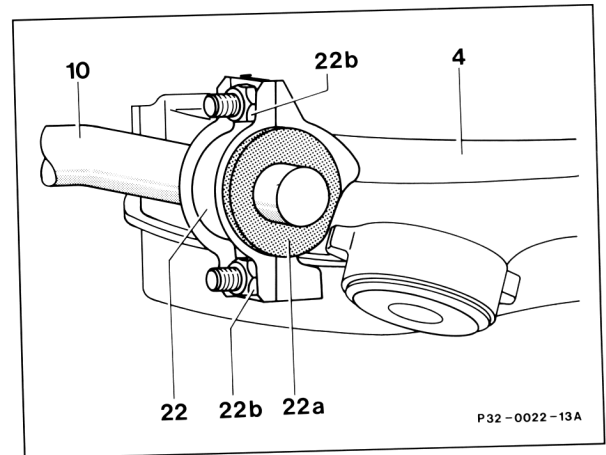
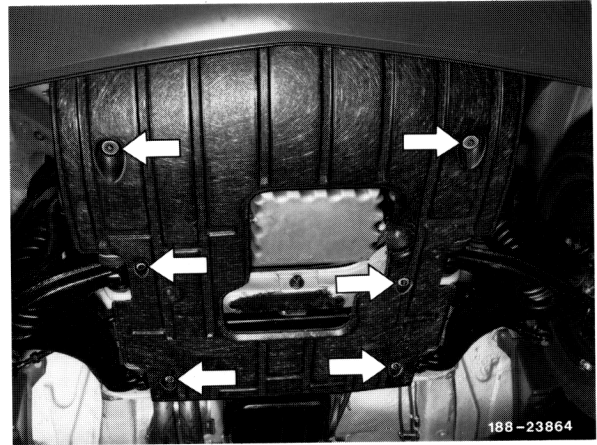
32.0701 - 300/2

Note

Mount and tighten mount for torsion bar on wishbone and holders only in position coinciding with ready-to-drive state.

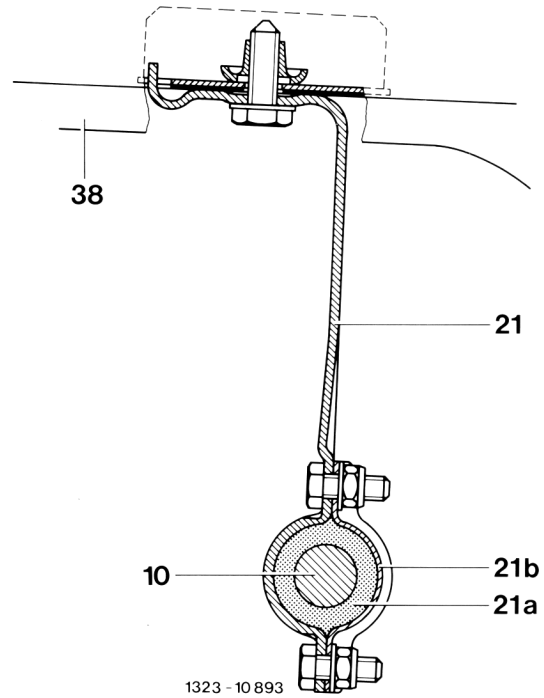
Removal

- 1 Lift vehicle, remove front wheel. Lug bolts 110 Nm.
- 2 Remove bottom engine paneling when present.
- 3 Loosen mounting brackets for torsion bar mount (22) on left and right on wishbone (4) and remove.



4 Loosen mount for holders and remove torsion bar.

- 10 Torsion bar
- 21 Holder
- 21a Rubber mount
- 21b Mounting bracket
- 38 Front end

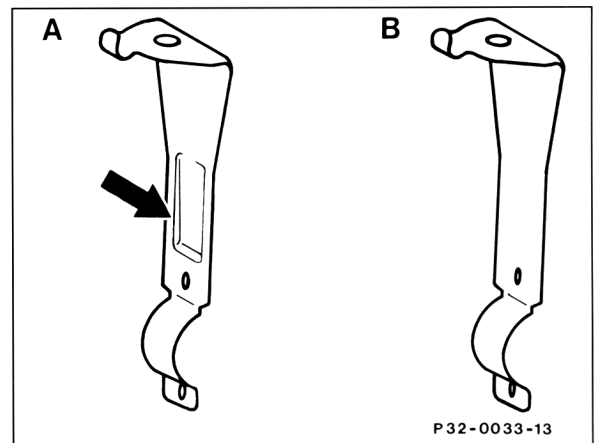
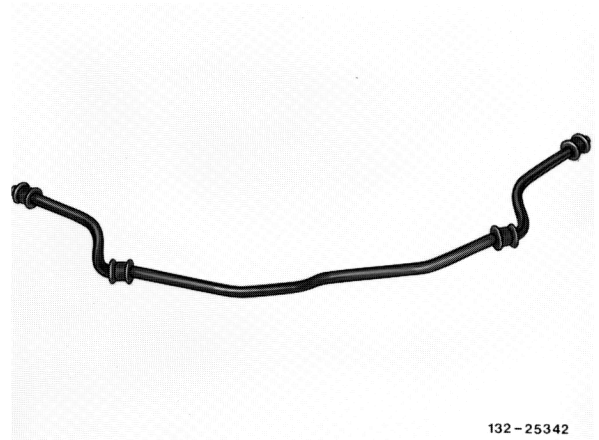


Installation

5 Check rubber mounts for torsion bar as well as suspension parts. Replace rubber mounts, if necessary.

Note

The holders on model 124 have been modified for stability reasons as of 05/89. On this version the bead is not present (arrow).



A. Version up to 04/89
B. Version as of 05/89

6 Install rubber mounts on torsion bar.

Note

With rubber mounts which do not have Teflon/polyester stockings on the inside of the bore (e.g. model 201) a rubber lubricant (e.g. naphtholene 000 989 14 60) can be used for removal and installation.

7 Mount torsion bar (10) on both holders (21). Tightening torque for new self-locking hex. nuts 20 Nm.

8 Fasten torsion bar mount on left and right wishbones. The tightening torque for the new self-locking hex. bolts is 20 Nm.

9 Install bottom engine compartment paneling.

- | | |
|-----|------------------|
| 4 | Wishbone |
| 10 | Torsion bar |
| 22a | Rubber mount |
| 22b | Mounting bracket |
| 22f | Hex. nut |

10 Install front wheel. Lug bolts 110 Nm.

11 Lower vehicle.

