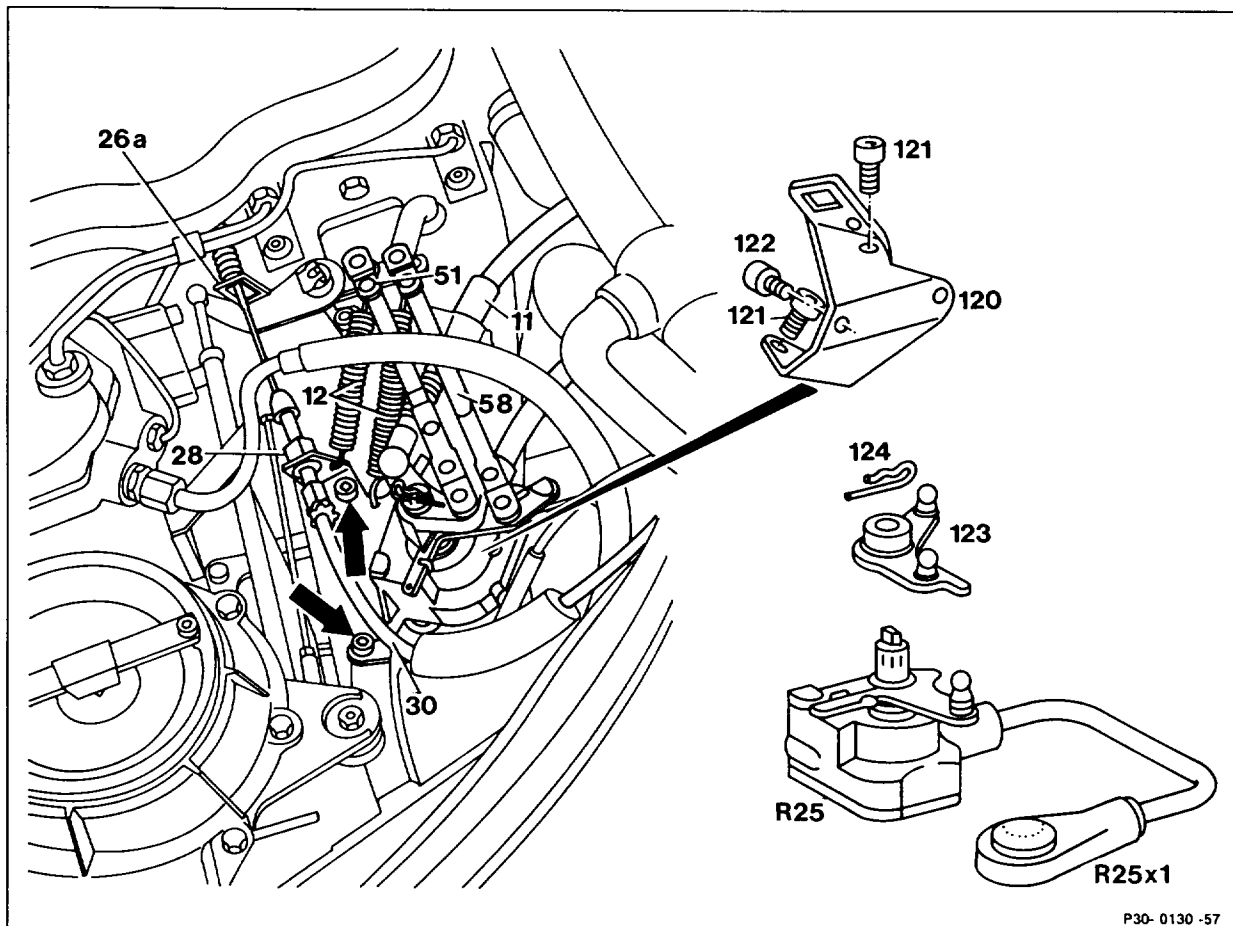


30-1156 Removing and installing electronic accelerator pedal position sensor

Preceding work:
Removing and installing air cleaner (09-1051).

Operation no. of operation texts and work units or standard texts
and flat rates:
30-1156.



P30-0130-57

Guide piece (26a) remove, install.

Bowden cable (30) take out through the slot, insert.

Plastic clip (28) remove, install.

Bowden cable (30) take out of bearing bracket (120), insert.

Connecting rods (51, 58) pull off, fit on.

Return springs (12) detach, attach.

Control pressure cable (11) detach, attach.

Note

First of all push plastic ball forward. When installing, ensure that the plastic ball engages in the guide piece.

Screws (121, arrows)	unscrew, screw in.
Position sensor (R25)	take off with bearing bracket (120), fit on.
Screws (122)	unscrew, screw in.
Position sensor (R25)	off from bearing bracket (120), fit on.
Position sensor plug connection (R25x1)	disconnect, plug in.
Lever (123)	remove from position sensor (R25), fit on. To do this, pull off locking element (124), install.
Accelerator control linkage	adjust (30-1010).

Note

Models 124, 126, 129, 201 basic and national version ^(USA) with ASR II

New production start of position sensor, actuator in control unit for electronic accelerator pedal (EFP).

Production breakpoint: June 1989

Model	Engine	Engine end no. automatic transmission
126.020	103.941	013694
126.024/025	103.981	088603

Production breakpoint: July 1989

Model	Engine	Engine end no. automatic transmission
124.026	103.940	068424
124.030/050/090	103.983	168785
201.029	103.942	032064

Production breakpoint: August 1989

Model	Engine	Engine end no. automatic transmission
129.060	103.984	000110

Production breakpoint: June 1990 (USA)

Model	Engine	Engine end no. automatic transmission
124.026	103.940	081064
124.030/050/090	103.983	215118
126.024/025	103.981	119422
201.029	103.942	048317