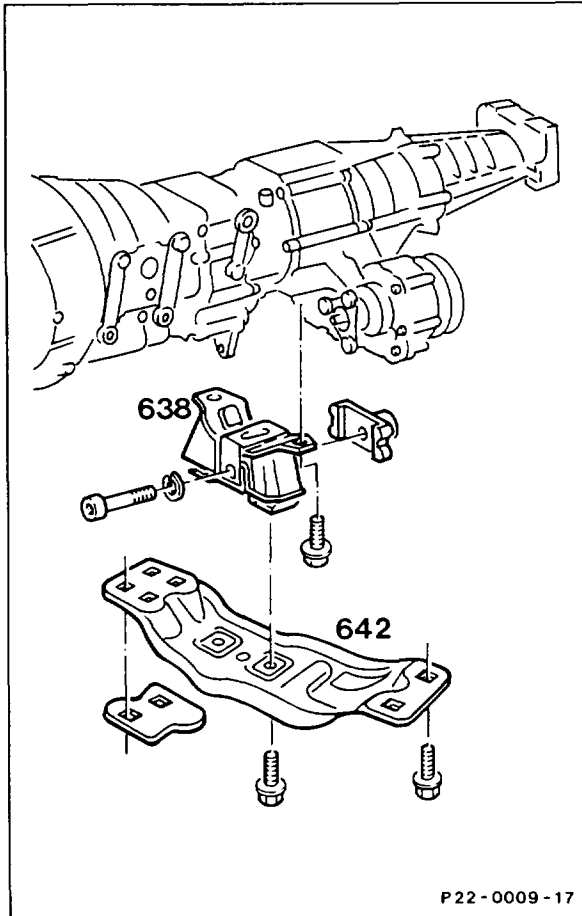


## 22-2120 Removing and installing rear engine mount

Operation no. of operation texts and work units or standard texts and flat rates

### A. Model 124 4MATIC



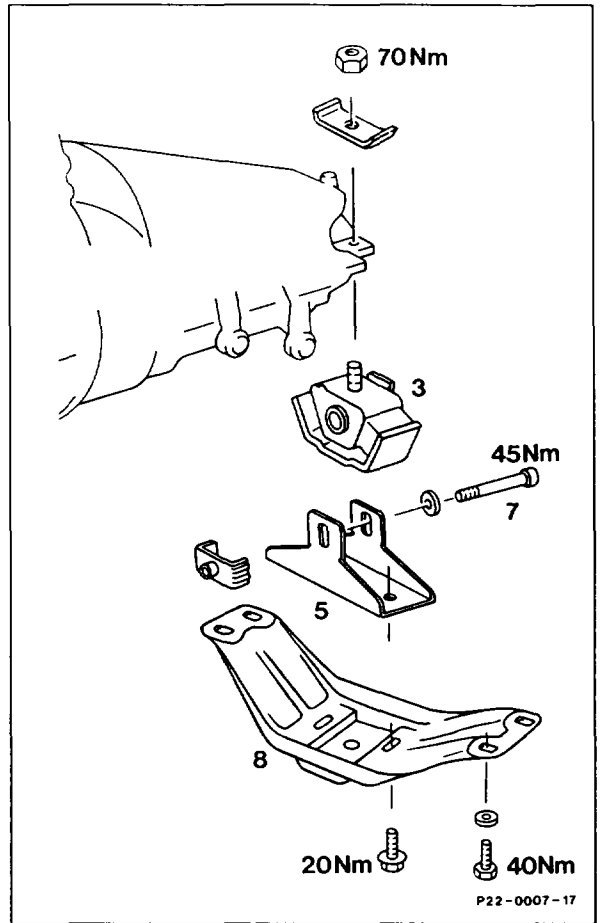
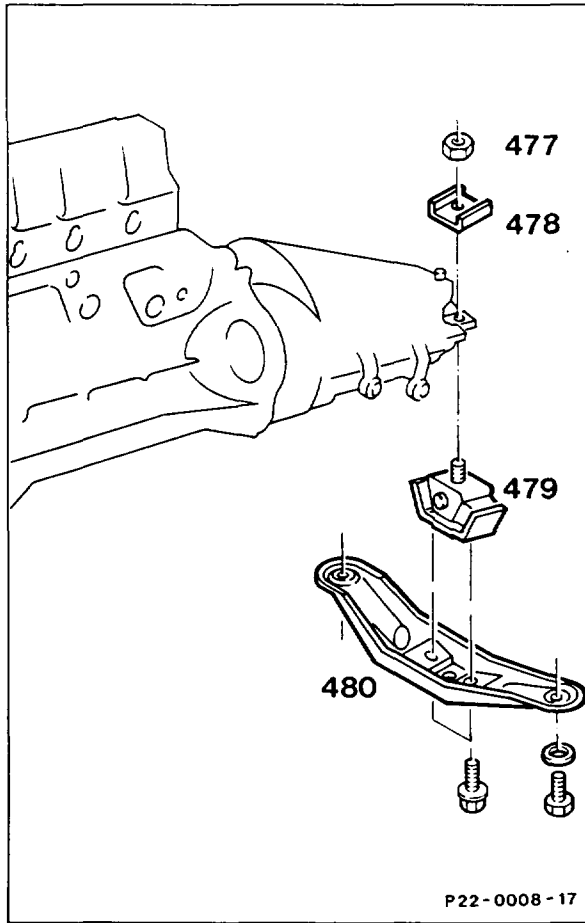
|                            |   |
|----------------------------|---|
| Transmission .....         | support.                                  |
| Engine carrier (642) ..... | remove, install, (M8) 20 Nm, (M10) 40 Nm. |
| Engine mount (638) .....   | remove, install.                          |
| Installation .....         | in the reverse order.                     |

#### Note

If the rear engine mount on 4MATIC models is replaced, the engine stop must be slackened after driving about 1000 km and 10000 km, respectively (22-2200).

**B. Model 124**

**Model 124 USA (retrofitting)**



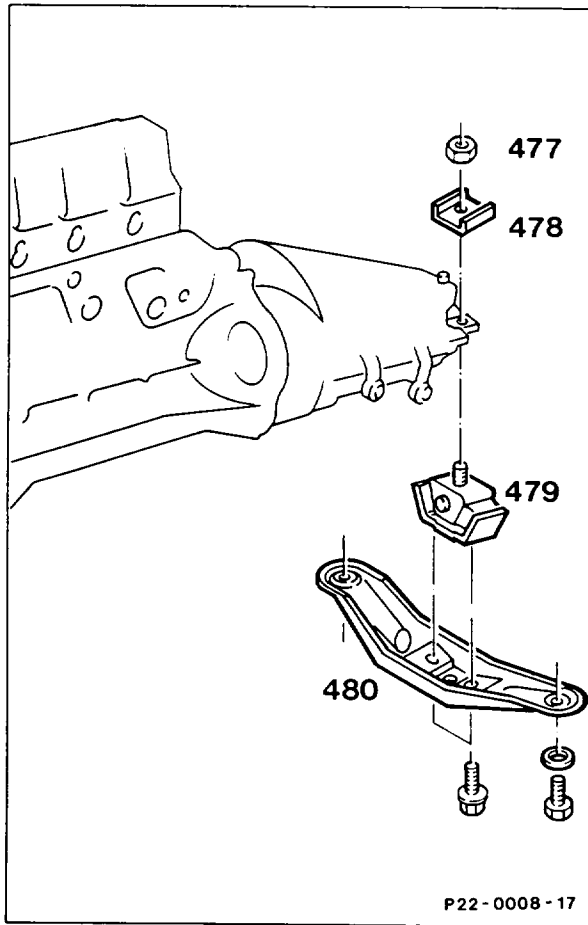
Transmission .....  
 Engine carrier (480) or (8) .....  
 Engine mount (479) or (3) with bracket (5) .....  
 Installation .....

support.  
 remove, install, (M8) 20 Nm, (M10) 40 Nm.  
 remove, install, nut (477) or (1) 70 Nm, bolt (7) 45 Nm.  
 in the reverse order.

**Note**

If the rear engine mount with stop limiter (freeway-hop) is replaced the engine stop must be adjusted after driving about 1000 km and about 10000 km (22-2130).

**C. Models 107, 126, 201**



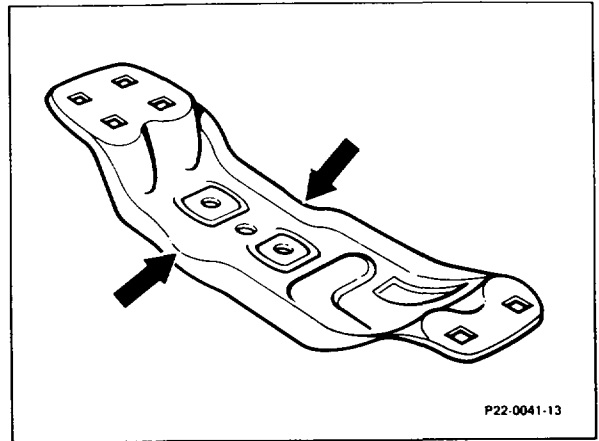
|                            |  |
|----------------------------|--|
| Transmission .....         | support.   |
| Engine carrier (480) ..... | remove, install, (M8) 20 Nm,<br>Models 107, 126 (M10) 45 Nm,<br>Model 201 (M10) 40 Nm. |
| Engine mount (479) .....   | remove, install, nut (477) 70 Nm.  |

**Notes**

**Modification to rear engine carrier**

The sheet metal thickness of the rear engine carrier has been increased from 2 mm to 2.5 mm.

Identification: recess (arrows) on outer edge of engine carrier.



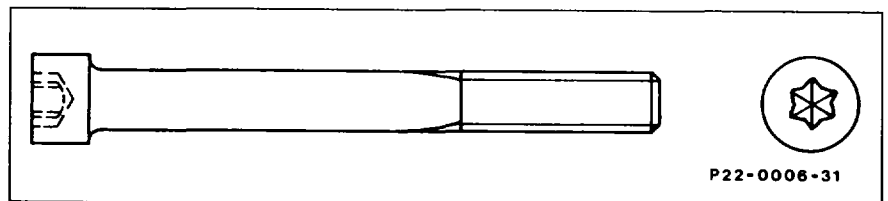
**Thickness of engine carrier material, production breakpoint: 08/1987**

| Model              | Engine  | Engine end no.      |                        | Vehicle ident end no. |        |
|--------------------|---------|---------------------|------------------------|-----------------------|--------|
|                    |         | manual transmission | automatic transmission | A                     | F      |
| 124.226            | 103.940 | *                   | *                      | *                     | *      |
| 124.230<br>124.290 | 103.983 | *                   | *                      | 552574                | 047874 |

\* not recorded

**Different securing bolt for engine mount to rear engine carrier**

A bolt head with internal torx (previously hexagon socket) is used.

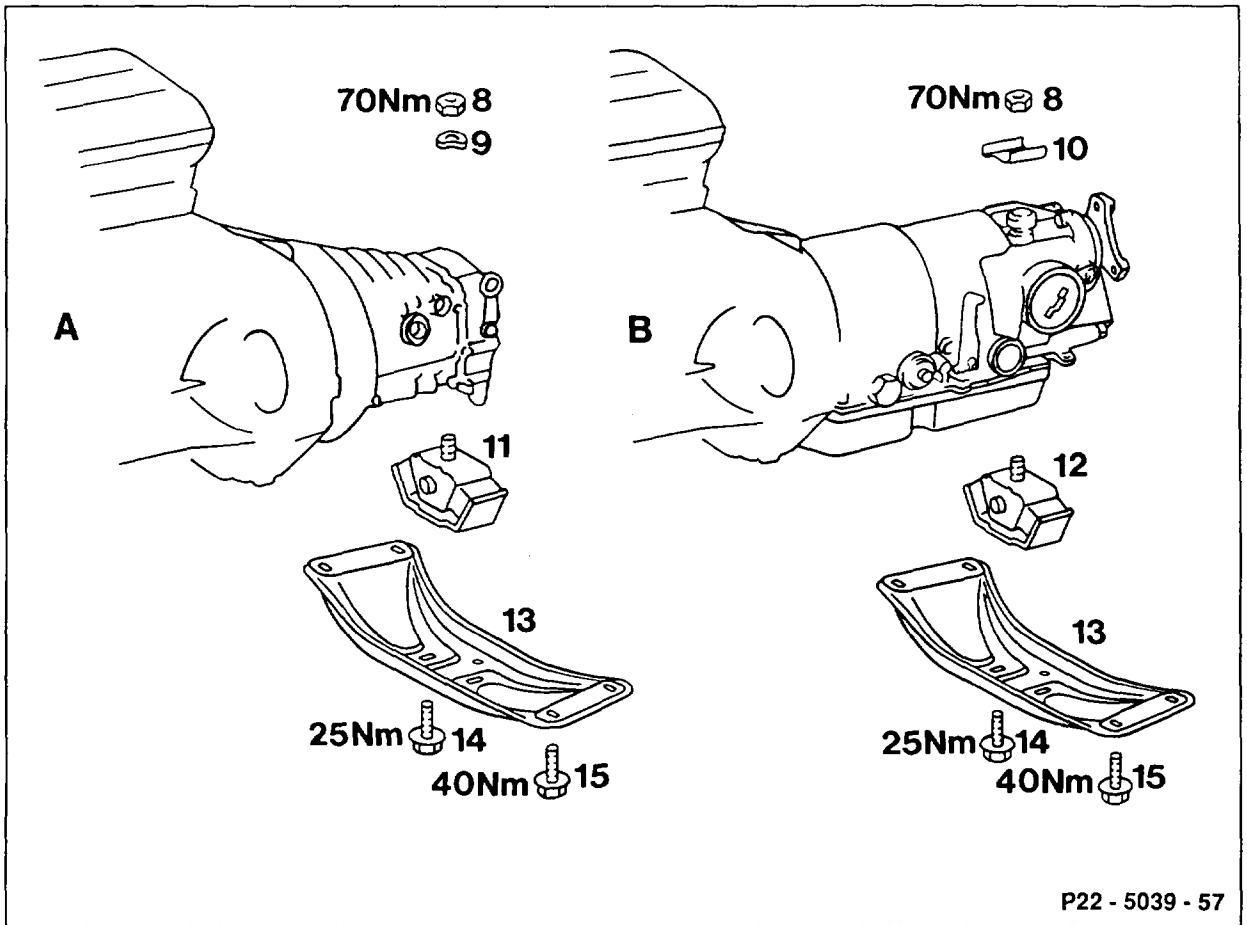


**Internal torx securing bolt, production breakpoint: 10/1985**

| Model              | Engine  | Engine end no.      |                        | Vehicle ident end no. |   |
|--------------------|---------|---------------------|------------------------|-----------------------|---|
|                    |         | manual transmission | automatic transmission | A                     | F |
| 124.226            | 103.943 | 000385              | 000928                 | *                     | * |
| 124.230<br>124.290 | 103.985 | 001824              | 006698                 | *                     | * |

\* not recorded

D. Model 129



A Manual transmission  
 B Automatic transmission

|  |   |
|--|---|
| Transmission .....   | support.                                |
| Automatic transmission: cable straps of cable<br>of kickdown switch at engine carrier (13) ..... | slacken, tie.                           |
| Engine carrier (13) .....  | remove, install, M8 25 Nm,<br>M10 40 Nm |
| Engine mount (11 or 12) .....  | remove, install (70 Nm).                |
| Washer (9) or pad (10) .....   | note.                                   |