

22-2110 Removing and installing front engine mounts

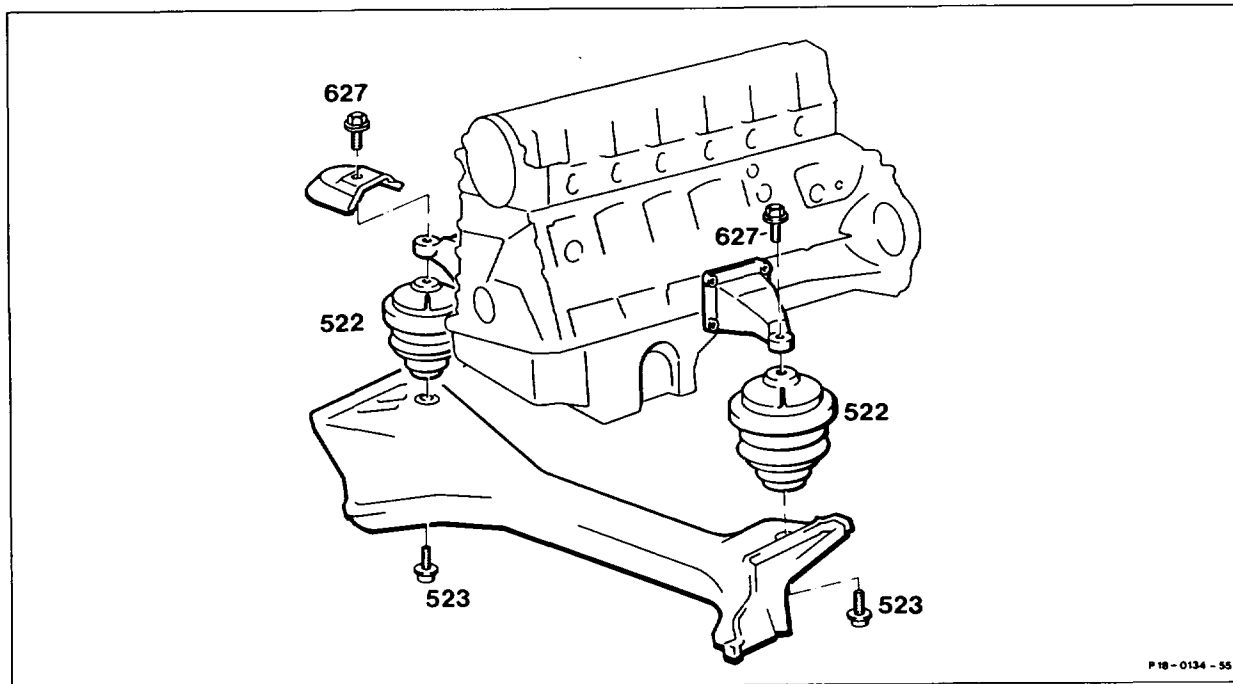
Preceding work:

Warning instructions when hood open (01-0085).

Bottom engine compartment panel removed (Maintenance

Manual Volume 2, Op. no. 6190).

Models 107, 124, 124 4MATIC, 126, 201



Ground cable at battery	detach, attach (step 1).
Air scoop	remove, install (step 2).
Fan shroud	detach, attach (step 3).
Bolts (627)	unscrew, screw in, 55 Nm (steps 4 – 5).
Engine	raise, lower (step 6).
Bolts (523)	unscrew, tighten, Model 124, 201 40 Nm, Model 107, 126 70 Nm, (step 7).
Engine mounts (522)	remove, install (step 8).
Installation	in the reverse order.

Tightening torques in Nm

Hexagon socket screw for engine mount to frame cross member, Model 124, 201	40
Hexagon socket screw for engine mount to frame cross member, Model 107, 126	70
Hexagon bolt for engine mount to engine support	55

Notes

Modifications to engine mount and engine shock absorber

Modified engine mounts, shield and engine shock absorber with additional protective hose are fitted.

These measures reduce stuttering and vibrations when engine idling.

Identification: modified part number (see table).

Production breakpoint: 10/1985

Designation	Present Part No.	Previous Part No.
Right engine mount	123 241 52 13	124 241 12 13
Left engine mount	123 241 50 13	123 241 09 13
Right shield	123 241 11 34	126 241 04 34
Engine shock absorber	126 240 02 48	123 240 23 48 with white dot
Protective hose	126 241 00 33	-

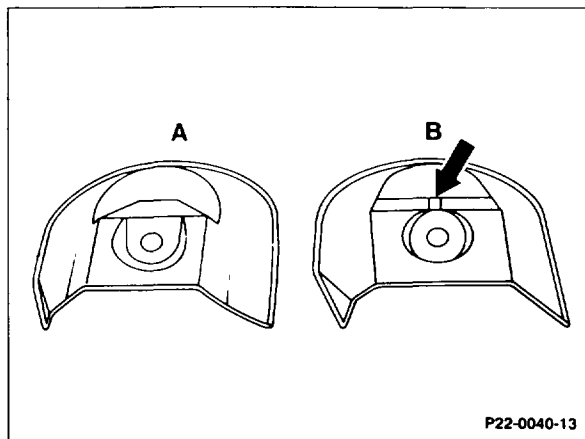
Production breakpoint: 10/1986

Model	Engine	Engine End No.		Vehicle Ident End No.	
		manual transmission	automatic transmission	A	F
126.026	103.941	*	*	*	*
126.024 126.025	103.981	*	*	289105	*

* not recorded

Modifications to shield for right engine mount

The shape of the shield has been modified. It is provided with a recess (arrow) for the locating lug on the engine mount.



A Previous version
B Present version

Shield, production breakpoint: 03/1988

Model	Engine	Engine End No.		Vehicle Ident End No.	
		manual transmission	automatic transmission	A	F
124.026	103.940	019887	044280	*	*
124.030 124.050 124.090	103.983	021817	113910	*	*
201.029	103.942	009488	013000	*	*

* not recorded

Material modifications to front engine mount

Use of a higher damping rubber blend has produced improved strength.

Production breakpoint: 07/1989 (without air conditioning or automatic climate control)

Model	Engine	Engine End No.		Vehicle Ident End No.	
		manual transmission	automatic transmission	A	F
124.026	103.940	027368	068696	*	*
124.030 124.050 124.090	103.983	032118	175999	*	*
201.029	103.942	014824	033294	*	*

* not recorded

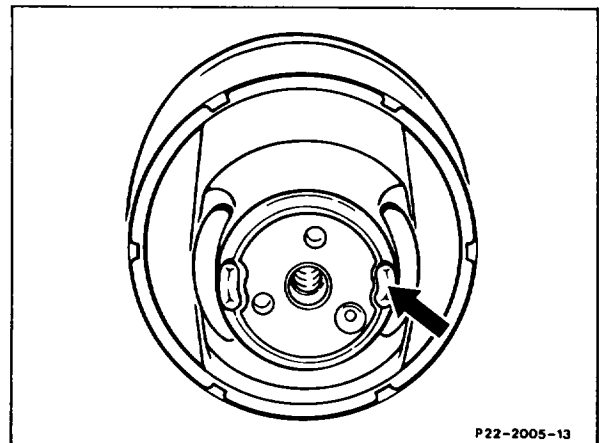
Engine mount material, prod. breakpoint: 07/1989 (with air cond. or autom. climate control)

Model	Engine	Engine End No.		Vehicle Ident End No.	
		manual transmission	automatic transmission	A	F
124.026	103.940	*	068978	*	*
124.030 124.050 124.090	103.983	*	175887	*	*
201.029	103.942	*	033259	*	*

* not recorded

Dimensional modification to front engine mounts

2 mm higher engine mounts are installed at the front. In addition, recesses (arrow) are provided on the bottom of these engine mounts and lugs on the engine supports. This enables the engine mounts to be installed free of stress.



The modified engine mounts can likewise be fitted to cars manufactured prior to this date.

Engine mounts of the previous and modified versions must not be installed together.

Model 124, 201

Production breakpoint

for engine mounts: 02/1989

Production breakpoint

for engine supports: 08/1989

Modification to shield for front engine mounts

The shape of the shield for the front engine mount has been modified.

Shield, production breakpoint: 01/1990

Model	Engine	Engine End No.		Vehicle Ident End No.	
		manual transmission	automatic transmission	A	F
129.060	103.984	000175	000653	*	*

* not recorded

Modification of shield for right engine mount, Model 126

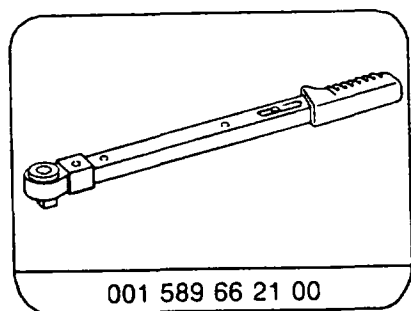
The shield has been standardized with that used on engines 116 and 117.

Shield, production breakpoint: 02/1987

Model	Engine	Engine End No.		Vehicle Ident End No.	
		manual transmission	automatic transmission	A	F
126.020	103.941	*	*	*	*
126.024 126.025	103.981	*	*	318672	*

* not recorded

Special tool



Removal, installation

- 1 Detach ground cable at battery.
- 2 Detach air scoop from air filter.
- 3 Remove fan cowl and place over the fan.

Installation instruction

Introduce catches into the mounts on the radiator.

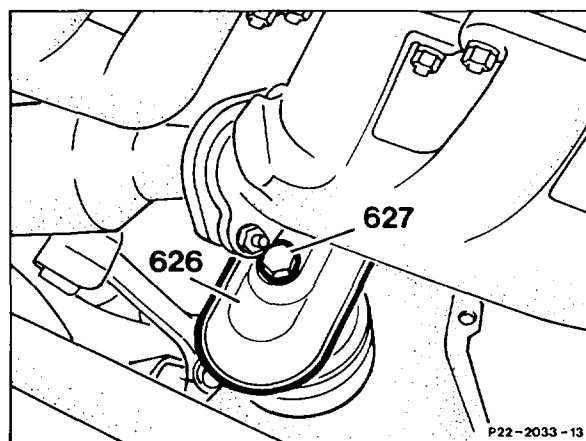
- 4 Unscrew bolts (627) on right engine mount from above.

Note

A shield (626) is installed above the right engine support.

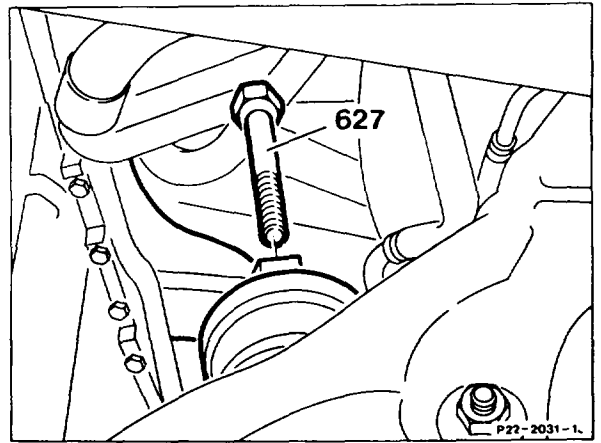
Installation instruction

Tightening torque 55 Nm.



5 Unscrew bolt (627) at the left engine mount.

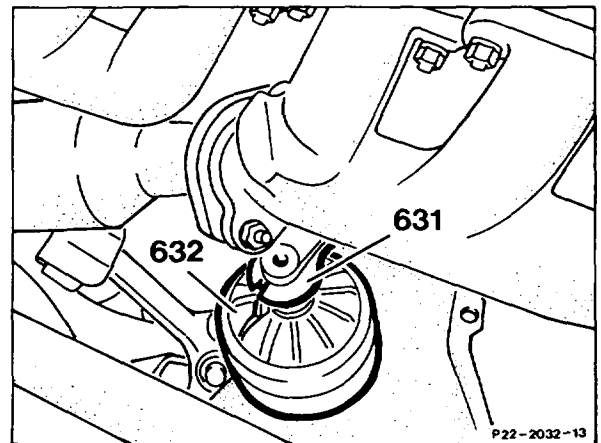
Installation instruction
Tightening torque 55 Nm.



Models 124, 201

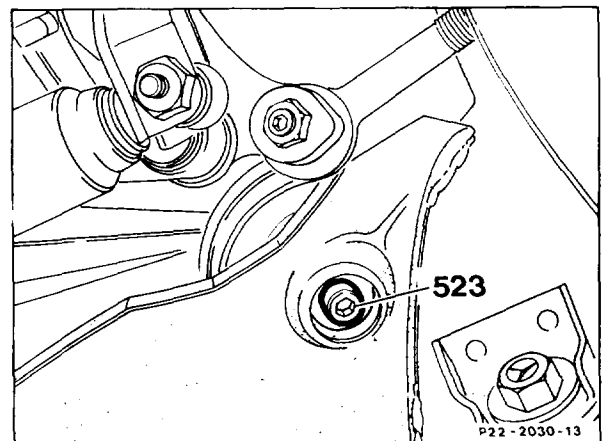
Installation instruction

Anti-twist lock (632) on left and right engine mounts must engage into the retaining slot (631) of the engine support.



6 Attach engine to the front suspension lug and raise slightly. Pay attention to the rear suspension lug, oil filter and coolant hoses.

7 Remove screws (523) on the left and right front engine mounts from below.



4MATIC

Remove 2 bolts (arrow) from below.

Installation instruction

Tightening torques

Model 124, 201 40 Nm,

Model 107, 126 70 Nm.

8 Take out engine mount.

Note

The engine mounts on the left and right are identical.

Installation is performed in the reverse order.

