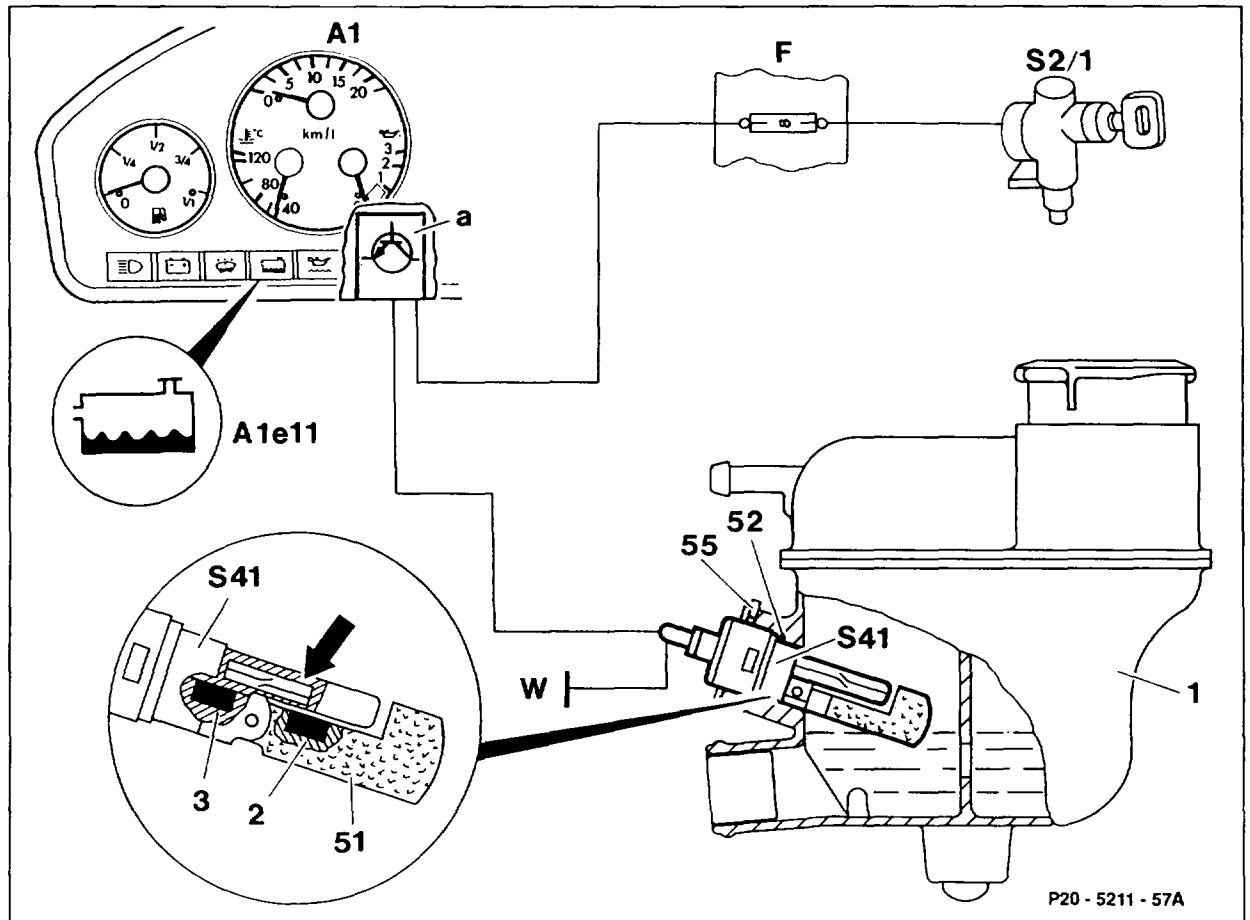


20-4400 Operation of electric coolant level gauge

Models 107, 124, 126, 201



1 Expansion tank
 51 Float
 52 O-ring
 55 Circlip
 A1 Instrument panel

A1e11 Coolant level indicator lamp
 a Microprocessor (base plate)
 F Fuse and relay box
 S41 Coolant level sensor
 W Ground

P20 - 5211 - 57A

General

The coolant level gauge monitors the coolant level in the expansion tank (1) when the engine is running.

When the ignition is switched on, the indicator lamp (A1e11) lights up weakly (check function) and goes out as soon as the engine is started provided the coolant is at the correct level.

The coolant level sensor (S41) has two catches of different width and can only be installed in one position. It is sealed with an O-ring (52) and fixed in place by a circlip (55).

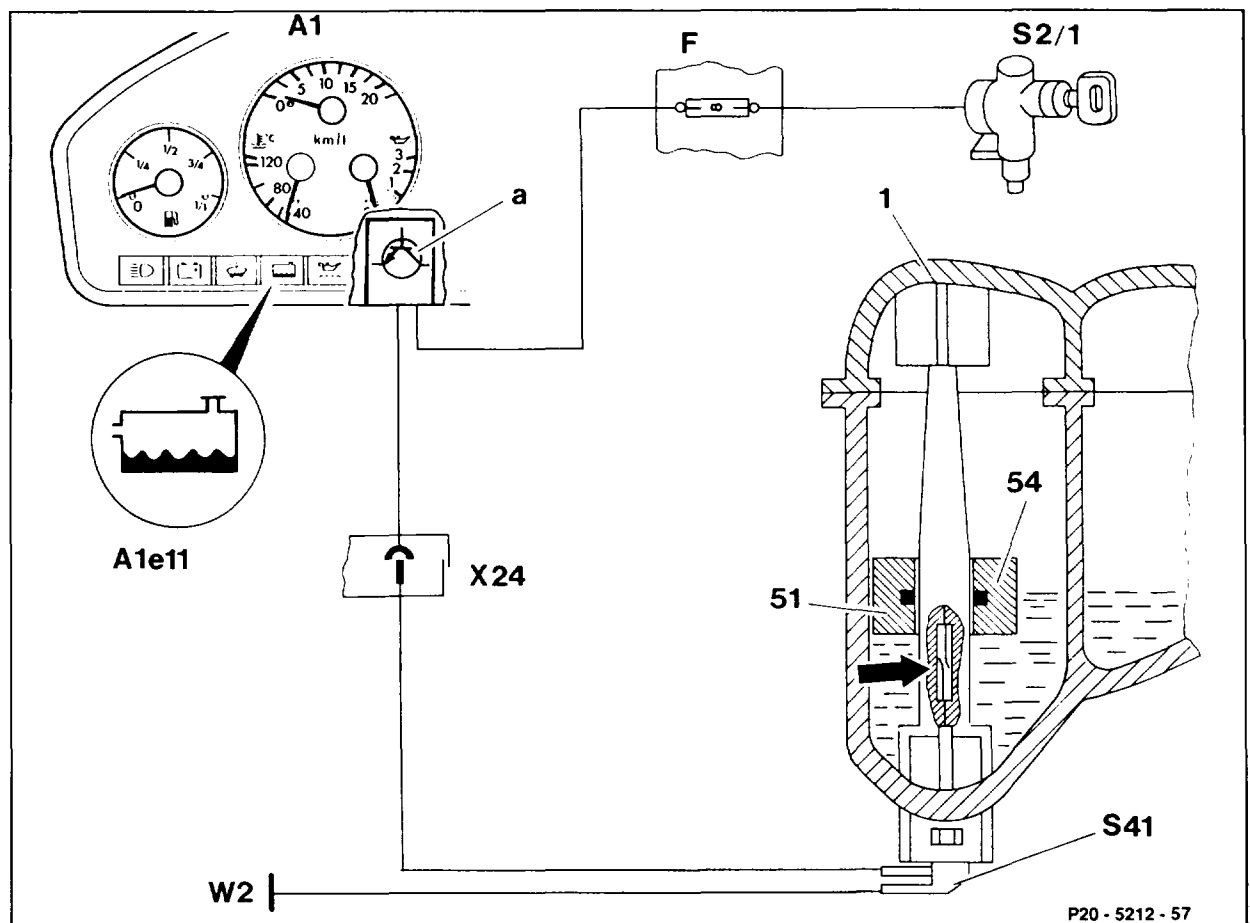
Operation

If the coolant is at the correct level, a permanent magnet (2) in the float (51) and a permanent magnet (3) in the sensor (S41) hold a contact (arrow) open.

If the coolant level is too low, the float (51) moves down and the permanent magnet (3) closes the contact (arrow) in the coolant level sensor (S41).

A permanent input signal (vehicle ground) is present at the microprocessor (a) in the electrical base plate of the instrument panel (A1) and the warning lamp (A1e11) lights up brightly.

Model 129



1	Expansion tank
51	Float
54	Ring magnet (permanent magnet)
A1	Instrument panel
A1e11	Coolant level warning lamp
a	Microprocessor (base plate)

F	Fuse and relay box
S41	Coolant level sensor
W2	Front right ground (at headlamp unit)
X24	Plug connection, headlamp harness

General

In model 129 the coolant level sensor (S41) is not directly based with coolant and can be removed and installed without draining the coolant in the expansion tank (1).

Operation

If the coolant level is too low, the ring magnet (54) in the float (1) closes the contact (arrow) in the coolant level sensor (S41).

A permanent input signal (vehicle ground) is present at the microprocessor (a) in the electrical base plate of the instrument panel (A1) and the warning lamp (A1e11) lights up brightly.