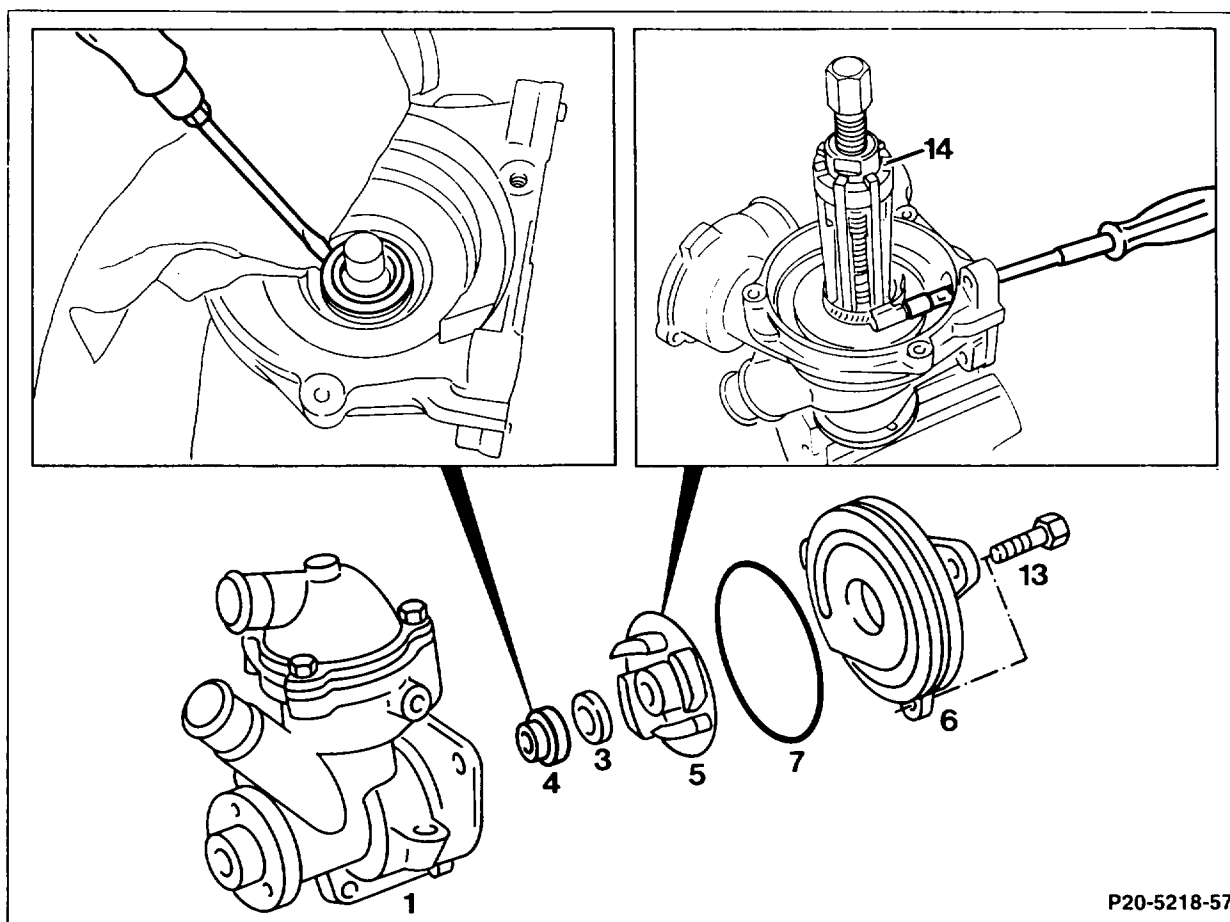


## 20-2250 Sealing coolant pump

Preceding work:  
Coolant pump removed (20-2100).



P20-5218-57

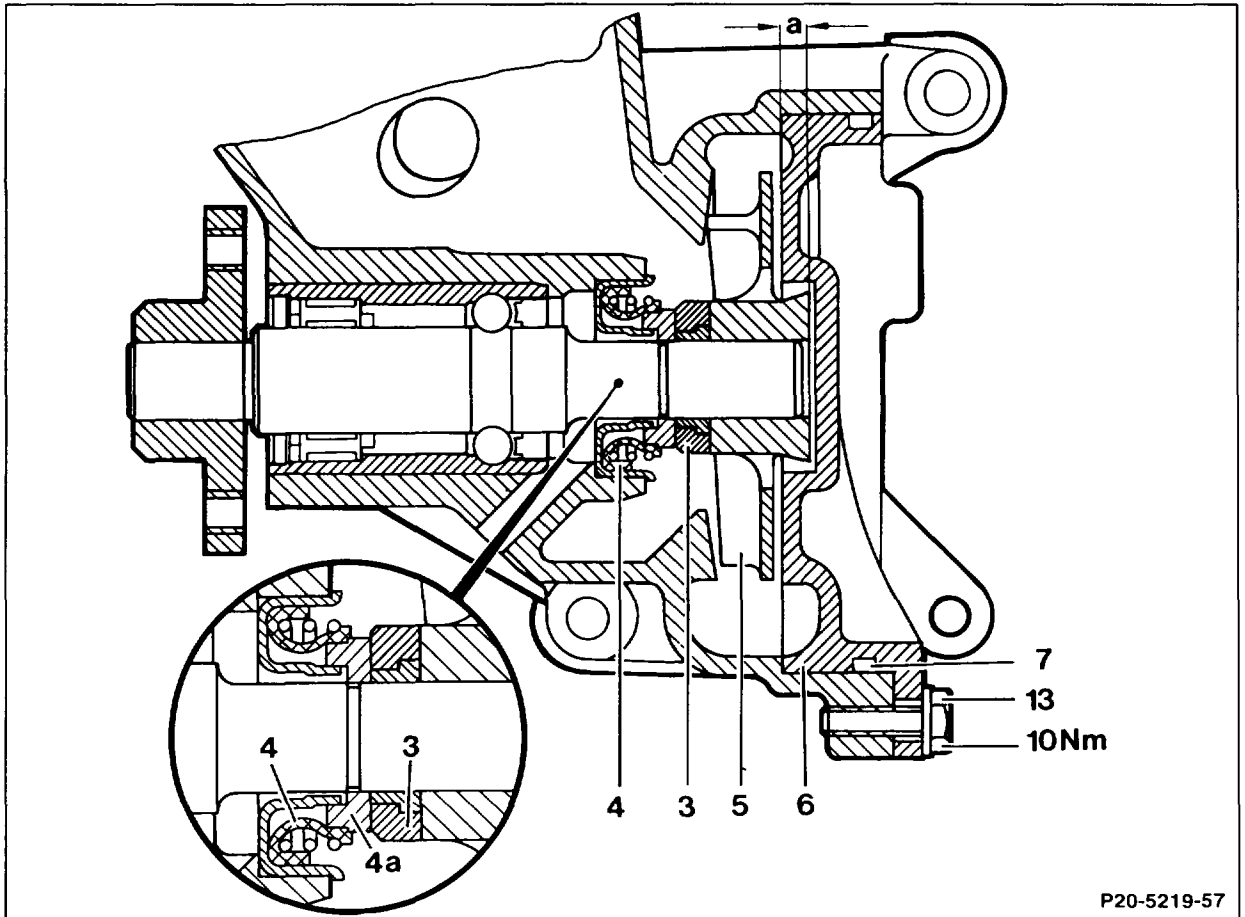
13 M6 × 20 bolt + washer

Spiral housing (6)	unscrew, screw on (10 Nm).
O-ring (7)	replace.
Puller (14) 000 589 94 33 00	position at impeller (5).
Grips of puller (14)	tension with sleeve ID 40 mm (shop-made) or suitable hose strap.
Impeller (5)	pull off.
Counter-ring (3)	pull off with pliers.

Cassette-type seal (4) ..... press out of coolant pump (1) around circumference with a screwdriver.



Do not damage coolant pump (1), use clean rag as base.



P20-5219-57

Mount for cassette-type seal (4) ..... clean.

**Note**

Sealant is applied to the circumference of the cassette-type seal (4).

New cassette-type seal (4) ..... press in as far as stop with a 40 mm dia. sleeve.

Counter-ring (3) .....	fit onto pump shaft with ground face toward seal (4a).
Impeller (5) .....	heat to approx. 100 °C.
Impeller (5) .....	press on.
Size (a) (5.6 – 5.8 mm) .....	observe.
Tight seat of impeller (5) on pump shaft .....	check.

**Special tool**

