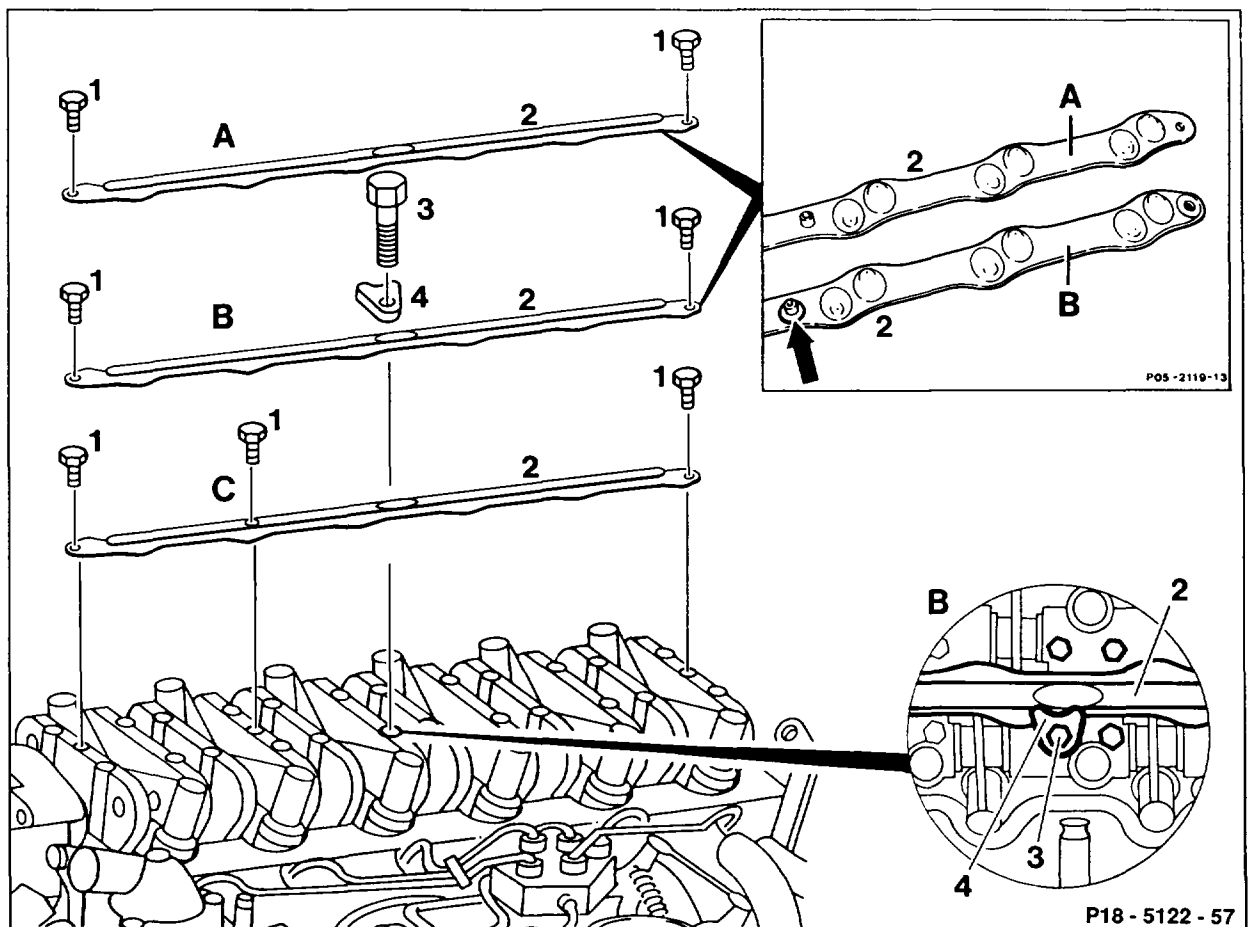


18-4200 Removing and installing camshaft oil pipe

Preceding work:
Cylinder head cover removed (01-0500)

Operation no. of operation texts and work units or standard texts
and flat rates



- A Oil pipe 1st version up to 10/86.
Attached with 2 M5 x 10 bolts, when performing
repairs replace oil pump and attachment with
version B.
- B Oil pipe 2nd version from 10/86 to 06/89 with
washer soldered on (arrow).
Attachment in addition with M8 x 73 10.9 bolt (3)
and half-moon shaped retaining plate (4).

- C Oil pump 3rd version as of 06/1989.
Attached with three M5 x 10 bolts.

Bolts (1) or (1) and (3) with retaining plate (4) . . . unscrew.
Camshaft oil pipe (2) remove, install.
Bolts (M5) and tapped holes (M5) degrease.

Tapped holes (M5) insert one drop each of Loctite 648,
part no. 003 989 32 71 10.

Note

This prevents the bolts slackening.

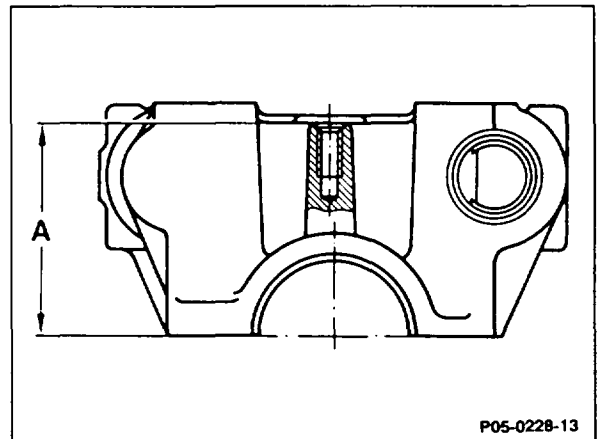
Bolts (1) or (1) and (3) with retaining plate (4) ... screw on. Tightening torque:
M5 5 Nm
M8 21 Nm

Engine wait at least 15 minutes before starting (basic
curing time).

Modification of arrangement of threads at camshaft bearing caps

The distance between oil pump and rocker arm has been enlarged as a result of the modified arrangement of the threads at the camshaft bearing brackets as 10/1985.

Size A = 45.5 mm (was 44 mm)



P05-0228-13

Modified arrangement of threads, production breakpoint: 10/1985

Model	Engine	Engine end no.		Vehicle ident end no.	
		man. transm.	autom. transm.	A	F
107.041	103.982	000154	000797	039305	*
124.026	103.940	001674	001697	130409	*
124.030 124.090	103.983	001901	010227	*	000652
126.020	103.941	000204	000812	205283	*
126.024 126.025	103.981	000479	003337	*	*

* not recorded

Oil pipe 2nd version (B)

The oil pipe is additionally attached to the 3rd rocker arm bearing bracket at the rear hole (intake manifold end) by a retaining plate and an M8 x 73 10.9 bolt without washer.

Oil pipe 2nd version (B), production breakpoint: 05/1986 up to 06/1989

Model	Engine	Engine end no.		Vehicle ident end no.	
		man. transm.	autom. transm.	A	F
107.041	103.982	000495	002463	050167	*
124.026	103.940	004621	007048	247878	*
124.030 124.090	103.983	005188	029831	249195	*
126.020	103.941	000951	003725	254136	*
126.024 126.025	103.981	001986	015232	255612	*
201.029	103.942	from start of production		229220	*

* not recorded

Oil pipe 3rd version (C)

The oil pipe is attached to the 3rd rocker arm bearing bracket by a M5 x 10 bolt. The previous retaining plate is no longer fitted.

Oil pipe 3rd version (C), production breakpoint: 06/1989

Model	Engine	Engine end no.	
		man. transm.	autom. transm.
107.041	103.982	002398	010995
124.026	103.940	027051	067489
124.030 124.050 124.090	103.983	031752	171810
124.226	103.943	000444	001057
124.230 124.290	103.985	002135	007954
126.020	103.941	004189	013701
126.024 126.025	103.981	007141	089946
129.060	103.984	from start of production	
201.029	103.942	014449	031481

* not recorded