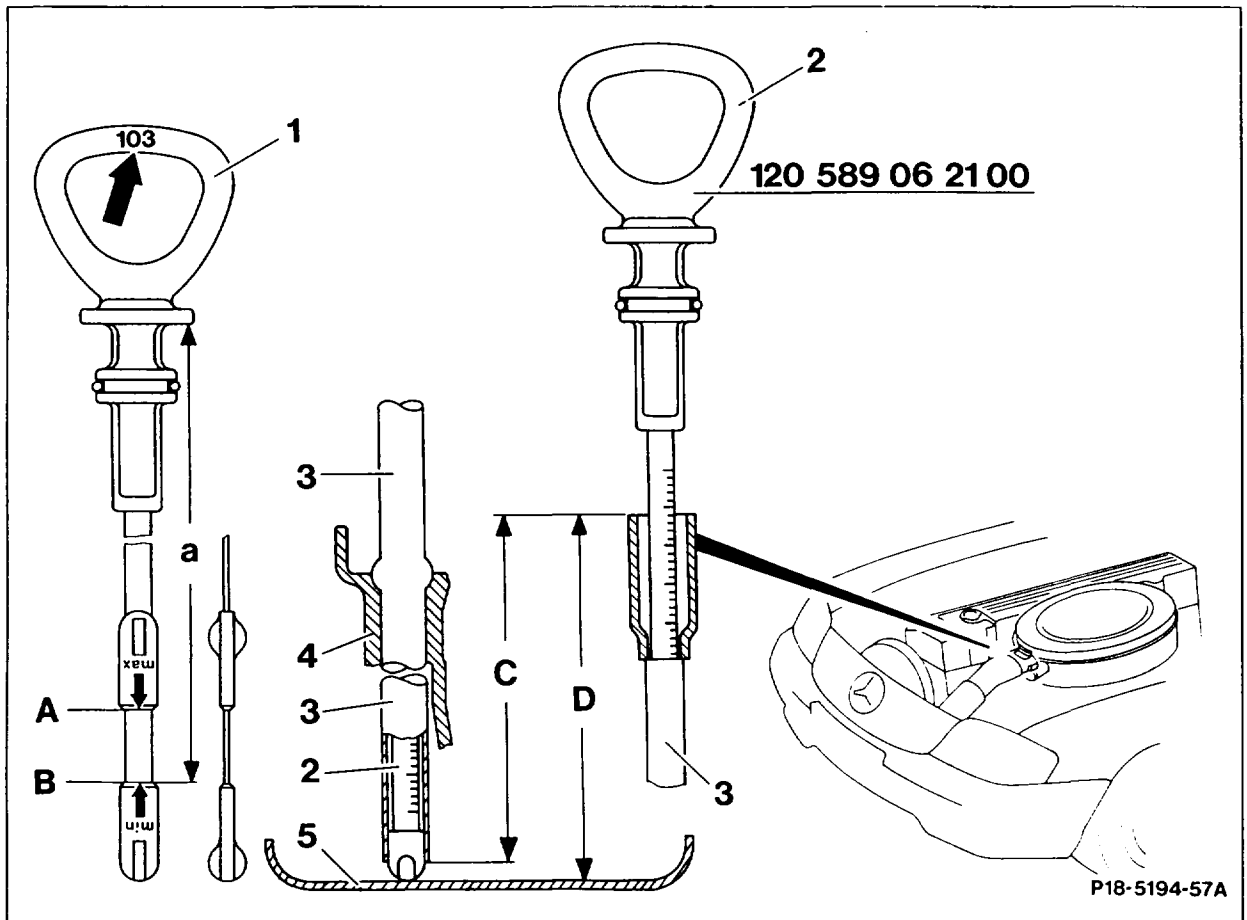


18-3500 Checking dipstick and guide tube

Preceding work:

Warning instructions when engine running (01-0085).



- | | | | |
|---|--------------------------------|---|----------------|
| 1 | Dipstick | 4 | Crankcase |
| 2 | Test dipstick 120 589 06 21 00 | 5 | Oil sump floor |
| 3 | Dipstick guide tube | | |

Dipstick (1)	remove.
Code number (arrow) on dipstick (1)	check according to table.
Test dipstick (2) 120 589 06 21 00 with millimeter gauge facing forward	insert as far as oil sump floor (5).
Size (D)	check according to table.

Test data of dipstick and guide tube in mm

Model	A to B on dipstick	a	C ¹⁾	D	Code number ²⁾
107	22	513	591.5	595	10308
124	22	513	591.5	595	10308
124 4MATIC	22	517	604.5	608	
126	22	513	591.5	595	10308
129	18	495 ³⁾	574.5	579 ⁴⁾	10308
201	22	513	591.5	595	10308

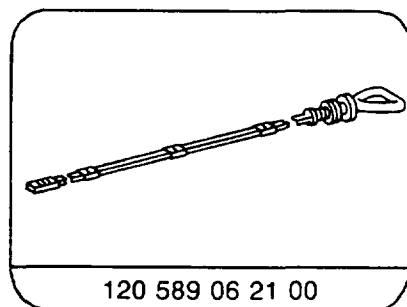
1) Measured in middle of guide tube.

2) In dipstick handle.

3) Size a was 512 up to engine 103.984-10-000 081 and 103.984-12-000 117.

4) Size D was 585, C was 580.5 up to engine 103.984-10-001887 and 103.984-12-007 425. Standard as of 06/1992.

Special tool



Engine 103.984, model 129 up to 06/1992

When dealing with the complaint: oil level at dipstick too low although specified quantity of oil poured in, or oil level warning lamp does not come on until oil level has dropped below "min" marking on dipstick.

Remedy: install dipstick guide tube with size (D = 579 mm).

Quantity of oil then when changing oil and filter 6.5 liters.