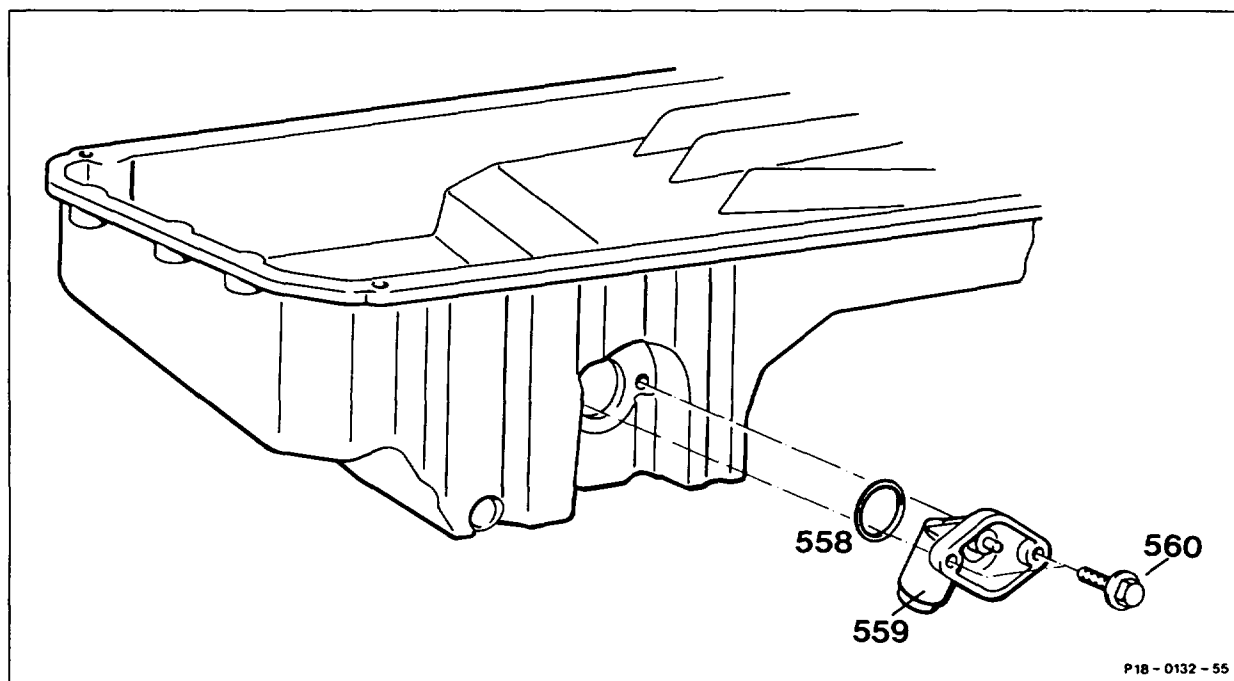


18-3300 Removing and installing oil level sensor

Preceding work:
Bottom engine compartment panel removed (Maintenance
Manual Volume 2, Op. no. 6190).

Operation no. of operation texts and work units or standard texts
and flat rates
18-4111, 18-4113

Engines except 4MATIC



Engine oil	partially drain (about 2.5 liters), pour in (18-0020)
Connector at oil level sensor (559)	unplug, plug in
Oil level sensor (559)	remove, install
O-ring (558)	replace
Engine	run and check for leaks

Note

For operation of oil level gauge see (18-3050)

Notes

Modified seal between oil level sensor and oil sump

The seal between oil level sensor and oil sump has been improved by modifying the material of the O-ring. The diameter is now 3.15 mm (was 3 mm).

Identification: color green (was black)

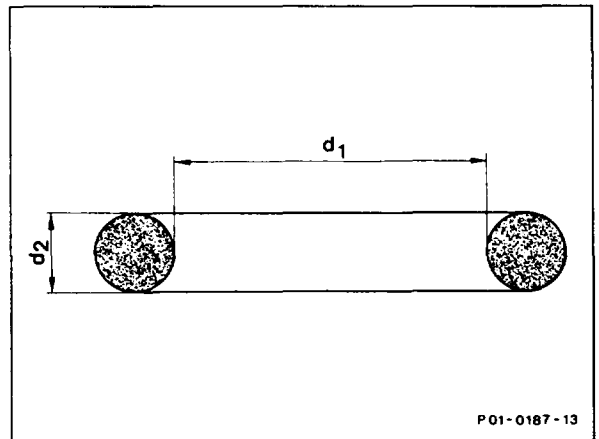
Production breakpoint: 09/1986

Improved seal between oil level sensor and oil sump

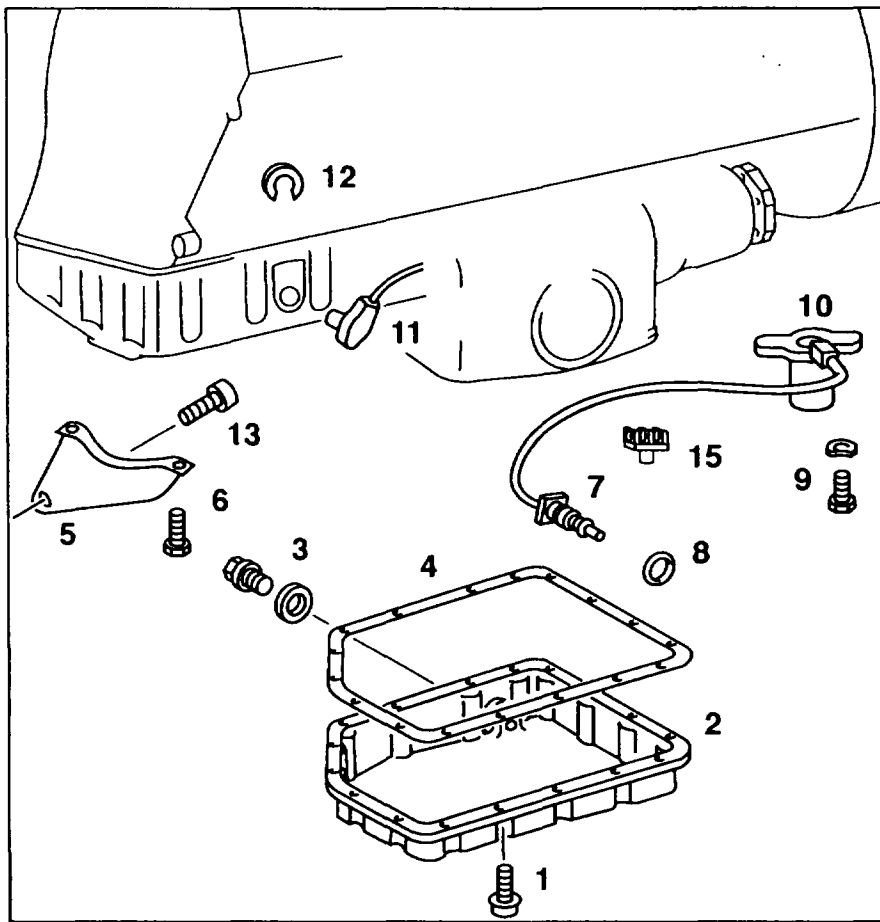
An improved seal between oil level sensor and oil sump has been achieved by altering the size of the O-ring.

Production breakpoint: 06/1987

Size	Previous version	Present version
d_1	40.20 mm	37.20 mm



4MATIC engine



P18-5326-37

Engine oil	drain, collect, pour in (18-0020)
Bottom part of oil sump (2)	remove, replace gasket (4), install (10 Nm)
Connector (11) and locking element (12)	unplug, plug in
Bolts (13) and (6)	unscrew, screw on (10 Nm)
Supporting bracket (5)	take off, fit on
Oil level sensor (10)	unbolt, bolt on
O-ring (8) at connector (7)	replace